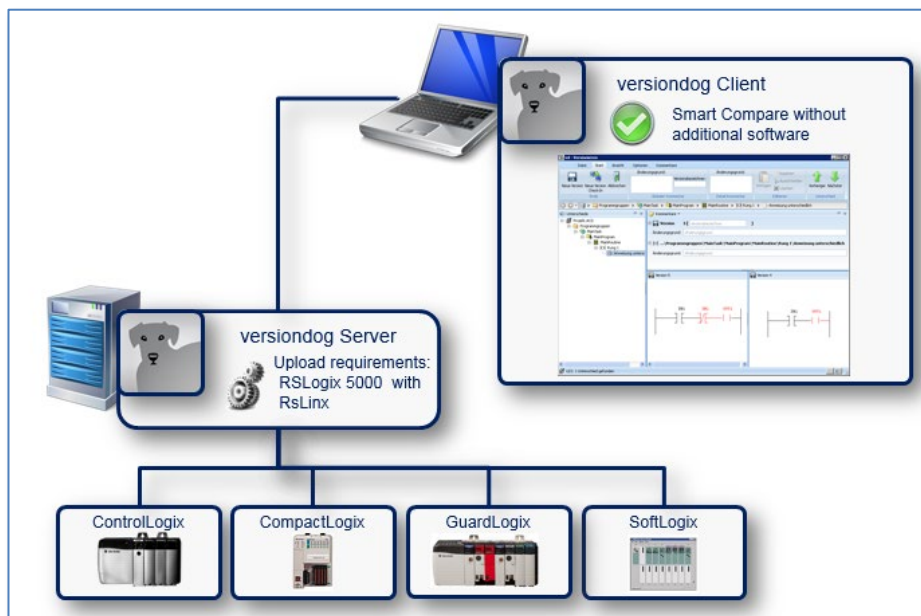


## Factsheet

# RSLogix 5000 from Rockwell Automation



## RSLogix 5000 from Rockwell Automation

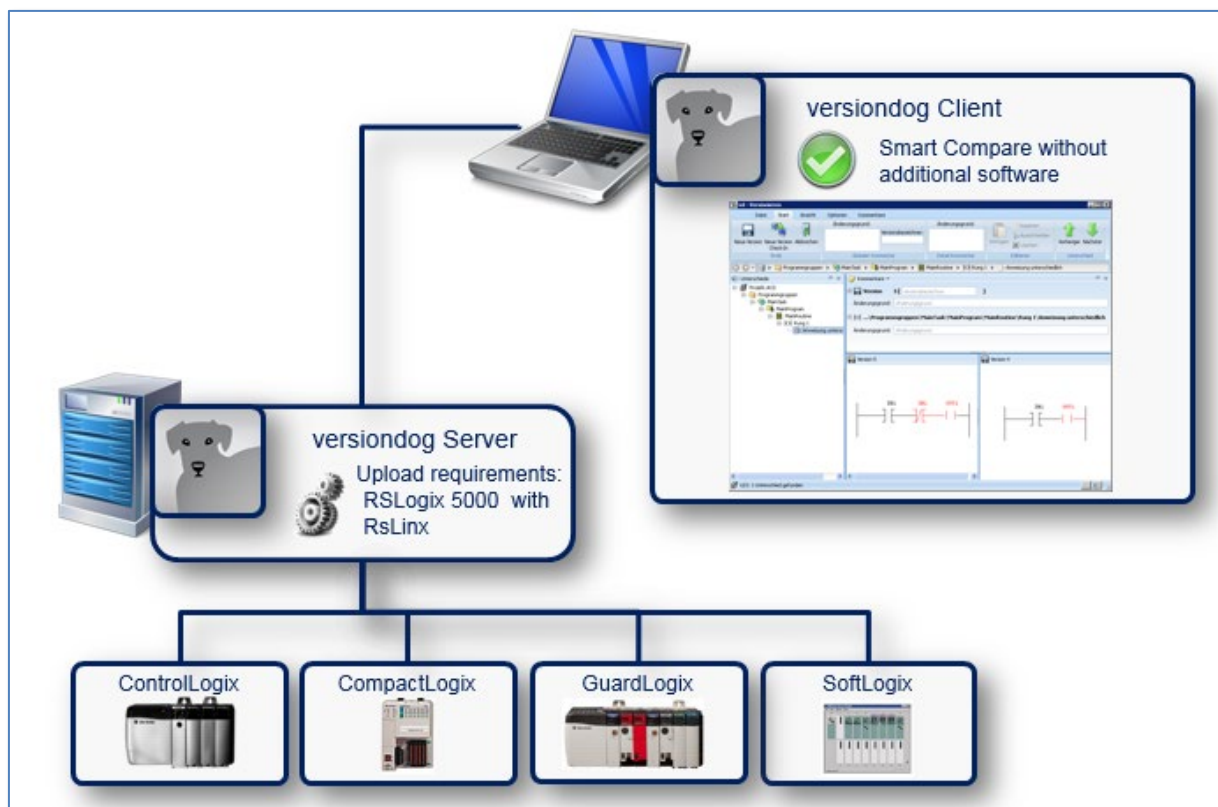
### versiondog – for more efficient production

versiondog is the leading version control and data management software solution for automated production. It makes tracking changes and safeguarding data significantly more efficient.

versiondog brings order and clarity where project data needs to be continually changed and made available from a central source. The increased safety, security and certainty provided by this software system quickly results in measurably increased productivity. versiondog makes it easy for you to optimise the interplay between all your different types of robots, controllers, field devices, drives, programming languages, file formats and software applications.

This data management system gives you ultimate data traceability, minimising your risks and costs, and saving you time and effort.

### Support for RSLogix 5000



## RSLogix 5000 from Rockwell Automation

### Integration

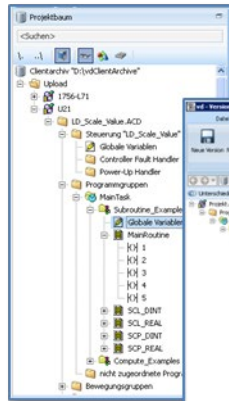


Fig. 1

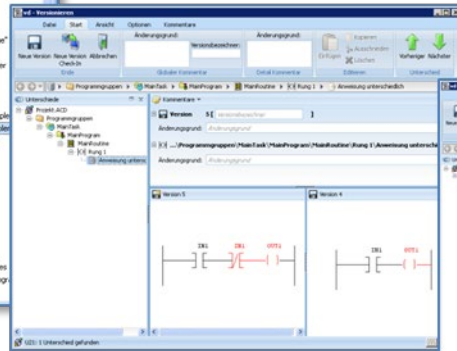


Fig. 2

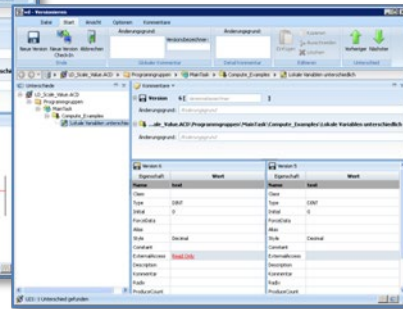


Fig. 3

Fig. 1: RSLogix 5000 project tree in versiondog

Fig. 2: Detailed graphical comparison of a rung

Fig. 3: Detailed tabular comparison of Data Files properties

## Features and functions

Integrated RSLogix 5000 project tree	✓
Detecting the differences between the backup and the version. Detecting the differences between a backup and the previous backup.	✓
Clear display of complete change history	✓
Detailed graphical comparison of rungs	✓
Automatic backup for disaster recovery	✓
Warning when forced values have been set on the device	✓
Ability to open the RSLogix 5000 development environment along with the selected project from within versiondog	✓
Supported controllers: - ControlLogix 5570 - CompactLogix 5370 - GuardLogix 5570 - SoftLogix 5800	✓
No additional software required for comparing and versioning on the versiondog client	✓
Custom component type for RSLogix 5000 projects	✓
Tutorial available in versiondog INFO	✓

## RSLogix 5000 from Rockwell Automation

---

### System requirements

versiondog version	V4. 0 onward
RSLogix 5000 (Standard or Professional Edition)	V10 to V30*
RSLinX Classic Gateway or RSLinX Enterprise Edition	V3.51 onward V5.51 onward

\*Interim versions are usually tested and supported.

### More information

#### AUVESY GmbH

Tel. +49 6341 6810-440

Email [info@auvesy.de](mailto:info@auvesy.de)

Web [www.auvesy.com](http://www.auvesy.com)