

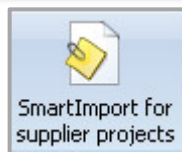
Factsheet

versiondog - Supplier management

Selected components

- Supplier Check-Out (user-defined target directory)
 - Compressed
 - Use project tree directory structure
 - Show target directory in file manager after Check-Out

Target directory: ...



SmartImport for supplier projects

Import	Component	Status
<input checked="" type="checkbox"/>	Conveyor 1.A1	🟢
<input checked="" type="checkbox"/>	Conveyor 1.A1.1	🟡
<input checked="" type="checkbox"/>	Conveyor 1.A1.2	🟢
<input checked="" type="checkbox"/>	Conveyor 1.A1.3	🟢
<input checked="" type="checkbox"/>	Conveyor 1.A1.4	🟢
<input checked="" type="checkbox"/>	Conveyor 1.B1	🟢
<input checked="" type="checkbox"/>	Conveyor 1.B1.1	🟢
<input checked="" type="checkbox"/>	Conveyor 1.B1.2	🟢
<input checked="" type="checkbox"/>	Conveyor 1.B1.3	🟢
<input checked="" type="checkbox"/>	Conveyor 1.B1.4	🟢
<input checked="" type="checkbox"/>	Conveyor 1.B1.5	🟢
<input checked="" type="checkbox"/>	FU 1.B1	🟢
<input checked="" type="checkbox"/>	FU 1.C1	🟢
<input checked="" type="checkbox"/>	FU 1.D1	🟢
<input checked="" type="checkbox"/>	Scanner 1.A1	🟢
<input checked="" type="checkbox"/>	Scanner 1.B1	🟢

Import all Add Remove

Close after successful import

Conveyor 1.A1.2

Original version

Component ID: 95B41E831B1C406CAF678F66D49424EF
 Delivery note: D:\ServiceUSB\SmartShopFlo...ple\DeliveryNote.vdog-sdn
 Project path: Y\SmartShopFloor\Assembly\...ty Gate 1\Conveyor 1.A1.2
 Component type: Simatic 57
 Version: 2
 Date: 27.07.2015 10:53

Target version

Version: 3 []
 Change reason: Change request 34009
 Comment: optimised conveyor transportation speed

🟢 No differences were found.

Differences: supplier data <-> original version

Create versions Cancel

versiondog – for more efficient production

versiondog is the leading version control and data management software solution for automated production. It makes tracking changes and safeguarding data significantly more efficient.

versiondog brings order and clarity where project data needs to be continually changed and made available from a central source. The increased safety, security and certainty provided by this software system quickly results in measurably increased productivity. versiondog makes it easy for you to optimise the interplay between all your different types of robots, controllers, field devices, drives, programming languages, file formats and software applications.

This data management system gives you ultimate data traceability, minimising your risks and costs, and saving you time and effort.

versiondog - Supplier management for external contractors

The full potential of the versiondog supplier management functions can be seen when considering the following situations involving external contractors:

- When an operator outsources the task of making changes and improvements to device programs to an external contractor
- When an external contractor does not have access to the versiondog system, i.e. because their PCs are not on the company network
- When it is necessary to ensure that an external contractor given the latest version (often on a USB stick) and it is vital that changes made are not overwritten at any stage

If the above situations are a regular occurrence for you, then using the versiondog supplier management functions will give you a clear advantage, saving you time and money, and increasing quality.

Granting access to current program versions

It is of great importance that all changes and improvements made to a device program, which is involved in the production process, be made to the latest version.

External contractor need to be given access to the latest versions and documentation of the device project in order to begin the process of making changes and improvements.

Workflow with versiondog:

The plant operator selects the components (PLCs, HMI, robots, conveyors, documentation, instructions, etc.) in the versiondog project tree and then performs a Supplier Check-Out. This function automatically copies the latest versions of the project together with a versiondog supplier delivery note and forms for documenting changes, on a USB stick (see Fig. 1).

versiondog – Supplier management for external contractors

Workflow without versiondog:

First the latest version of the project has to be found (this may involve searching through a number of sources and an appreciable degree of uncertainty). The version is then manually copied onto a USB stick for the external contractor to use.

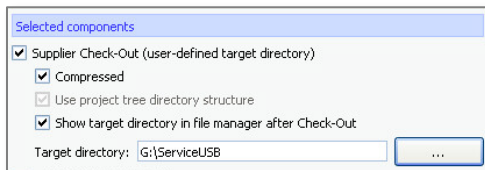


Fig. 1

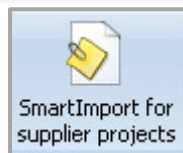


Fig. 2

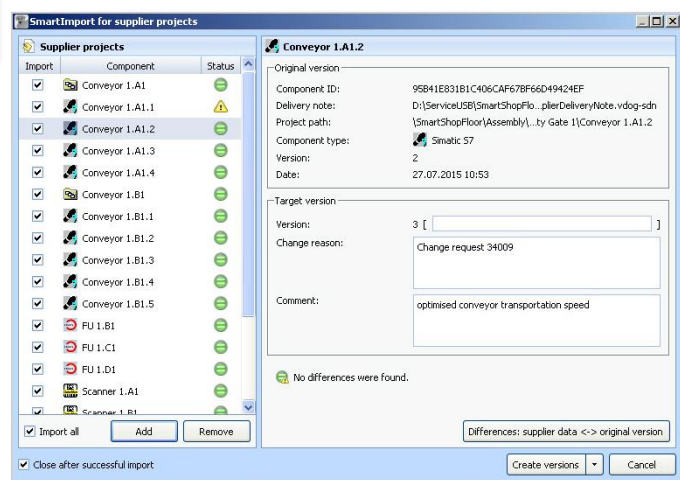


Fig. 3

Fig. 1: Options available in the Check-Out dialogue for a Supplier Check-Out

Fig. 2: SmartImport for supplier projects button, as seen in the UserClient

Fig. 3: Overview of SmartImport for supplier projects

Notes: Images taken from versiondog 5.0.

Receiving a new version once it has been created by the external contractor

The new version (with changes made by the external contractor) now counts as the current version and it must be made centrally available to others so that further improvements and changes can be carried out.

As soon as the external contractor has finished making changes to the device, the project data must be given back to the plant operator, so that

- The changes that have been made are never lost even after further changes and improvements are carried out and checked in
- In case of malfunction, rapid disaster recovery can be carried out immediately from a copy of the current version

versiondog – Supplier management for external contractors

Workflow with versiondog:

The operator receives the USB stick back from the external contractor and carries out a *SmartImport for supplier projects* (see Figs. 2 and 3).

This requires only a couple of clicks and has the following advantages:

- At the click of a button, the *SmartImport* displays the changed projects and automatically imports and stores the new versions
- All changes to project data can be seen in the detail comparison
- versiondog immediately shows you WHO changed WHAT, WHERE, WHEN and WHY. Comments from the documentation forms will be automatically attached to the version. This makes the work of external contractor clearly visible in the change history
- versiondog jobs ensure that the versions currently running on the device are the same as those that were saved onto the USB stick by the external contractor

Workflow without versiondog:

The project data on the USB stick of the external contractor must be transferred to the company's data storage location.

To do this, there are several manual processes and checks that are required:

- The previous program version(s) and the version created by the external contractor must be copied from the USB stick to the company's data storage location. This must be carried out following established file naming conventions and storage strategies
- The contractor needs to communicate the changes made to the supervisor (often in an unorganised way that may even involve looking through the program and attempting to remember what was done).
- Additional information concerning making changes must then be compiled, documented and archived

Possible savings per year

The figure below clearly shows the difference that working with versiondog makes:

```

Extra resources required (without versiondog) per day for managing external contractors
= Time spent finding project, testing, and handover + time spent on version control, detail
  comparisons, approving changes and storage
= 15 minutes + 30 minutes
= 45 minutes

Savings per year
= Working days per year * Cost per day * Expense ratio for employee per hour
= 288 days * 45 minutes * € 60 per hour
= ca. € 13,000 savings per year
    
```

Main features and functions

Feature "Supplier Check-Out": Provides you with the current version of the program, a versiondog supplier delivery note file, and forms for documenting changes without versiondog	✓
Feature "SmartImport for supplier projects": Automated import of programs and projects into the versiondog system	✓
Traceability of changes	✓
Support when receiving changes made by external contractors	✓
Save time thanks to standardised documentation of program changes	✓
Options for importing more than one project at a time (bulk import)	✓
versiondog INFO	✓

System requirements

versiondog release	from 3.1
--------------------	----------

More information

AUVESY GmbH

Tel. +49 6341 6810-440

Email info@auvesy.de

Web www.auvesy.com