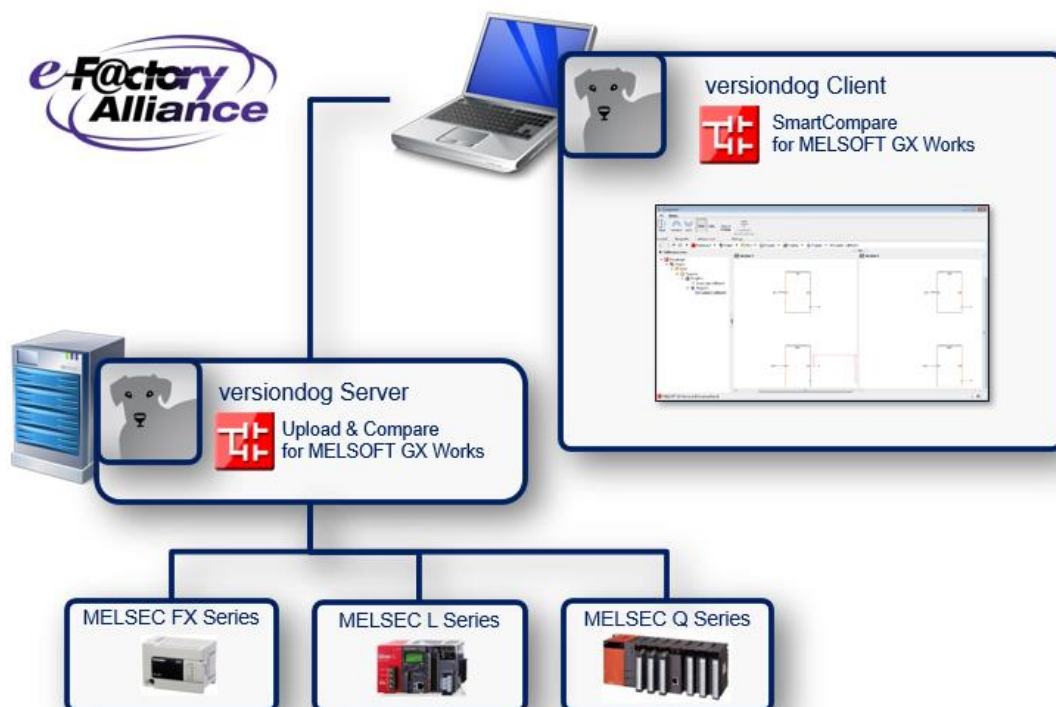


## Factsheet

# MELSOFT GX Works from Mitsubishi Electric



## MELSOFT GX Works

from Mitsubishi Electric

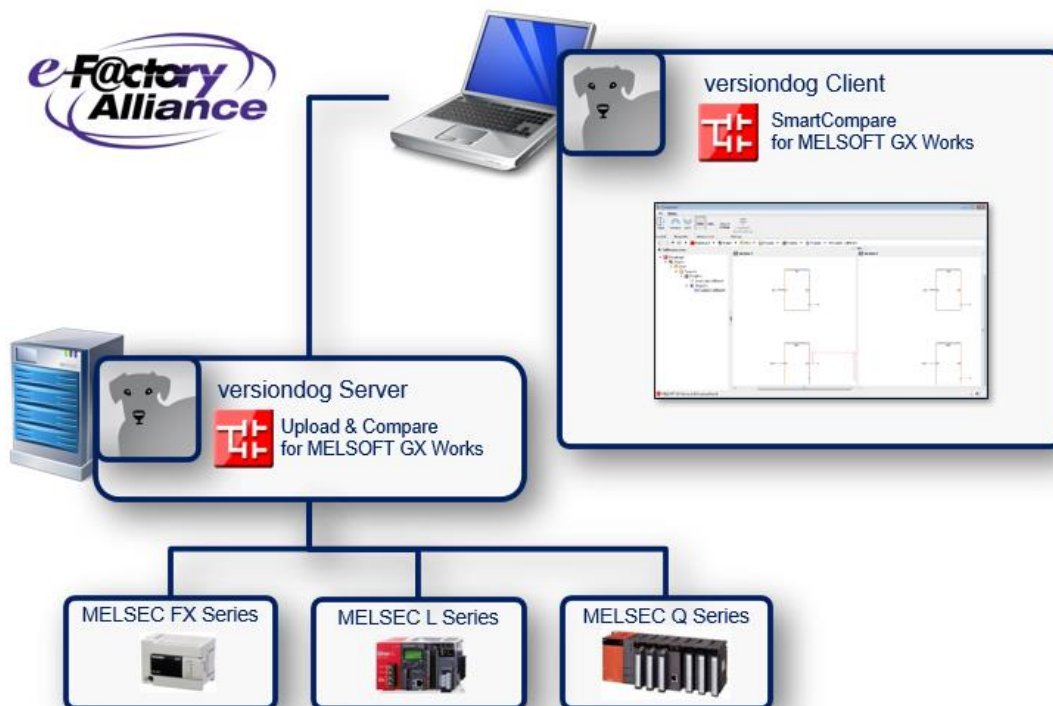
### versiondog - For more efficient production

versiondog is the leading version control and data management software solution for automated production. It makes tracking changes and safeguarding data significantly more efficient.

versiondog brings order and clarity where project data needs to be continually changed and made available from a central source. The increased safety, security and certainty provided by this software system quickly results in measurably increased productivity. versiondog makes it easy for you to optimise the interplay between all your different types of robots, controllers, field devices, drives, programming languages, file formats and software applications.

This data management system gives you ultimate data traceability, minimising your risks and costs, and saving you time and effort.

### Support for MELSOFT GX Works projects



## MELSOFT GX Works

from Mitsubishi Electric

### Details for integration

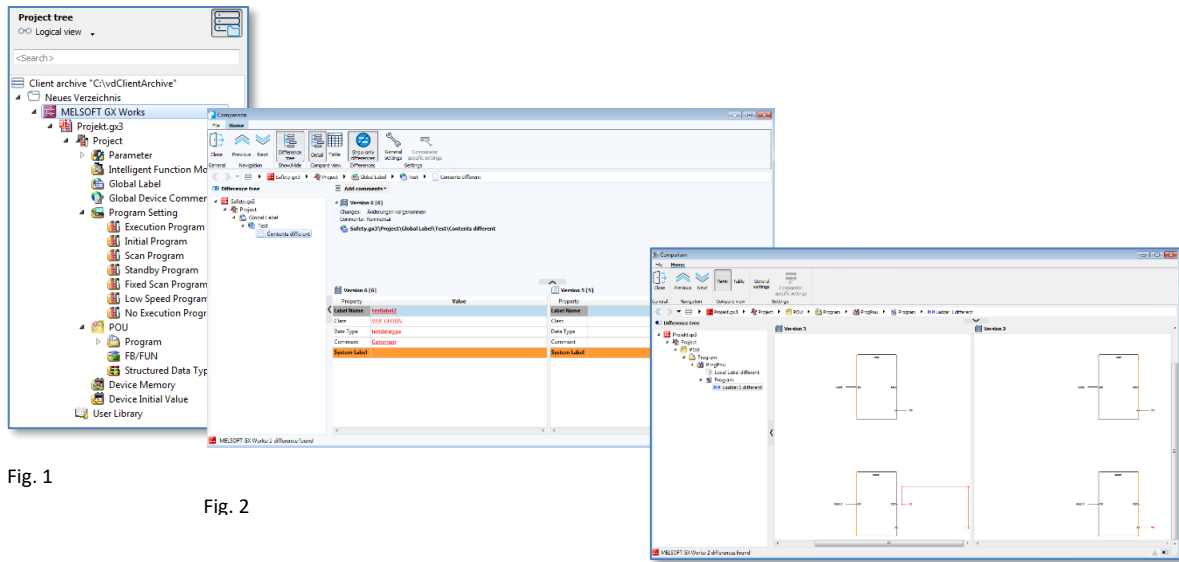


Fig. 1

Fig. 2

Fig.3

Fig. 1: The MELSOFT GX Works project tree in versiondog

Fig. 2: Detailed tabular comparison of the global label

Fig. 3: Detailed graphical comparison of a POU

## Features and functions

|  |   |
|--|---|
| AUVESY is a member of the e-F@ctory Alliance formed by Mitsubishi Electric Corp                | ✓ |
| Integrated MELSOFT GX Works project tree   | ✓ |
| SmartCompare for MELSOFT GX Works projects (Offline/Offline comparison)                        | ✓ |
| Detailed graphical comparison  | ✓ |
| Clear presentation of complete change history  | ✓ |
| - Check the currentness of the compiled versions of a project                                  | ✓ |
| Supported PLCs:  |   |
| - MELSEC Q series  | ✓ |
| - MELSEC FX series   |   |
| - MELSEC L series  |   |
| Open MELSOFT GX Works development environment with the selected project from within versiondog | ✓ |
| Custom component type for MELSOFT GX Works   | ✓ |
| Tutorial available in versiondog INFO  | ✓ |

## System requirements

|  |     |
|--|-----|
| versiondog                                     |     |
| MELSOFT GX Works2 > offline/offline comparison | 3.1 |
| MELSOFT GX Works2 > online/offline comparison  | 3.3 |
| MELSOFT GX Works3                              | 8.0 |

MELSOFT GX Works

from Mitsubishi Electric

## More information

### AUVESY GmbH

Tel. +49 6341 6810-440

E-Mail [info@auvesy.de](mailto:info@auvesy.de)

Web [www.auvesy.de](http://www.auvesy.de)