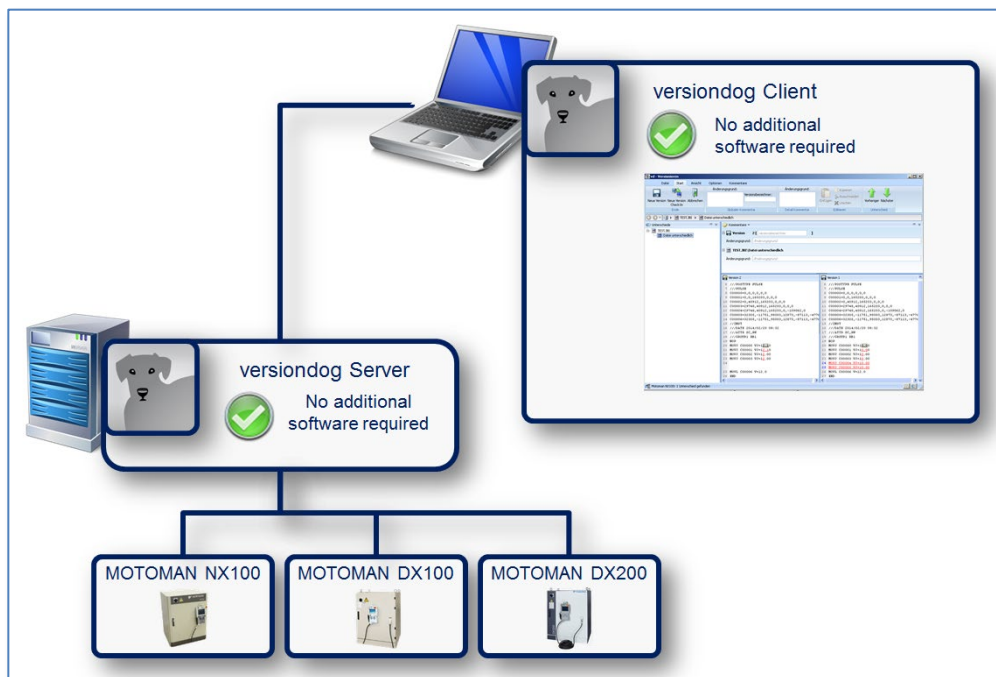


Factsheet

Motoman robots



YASKAWA Motoman robots

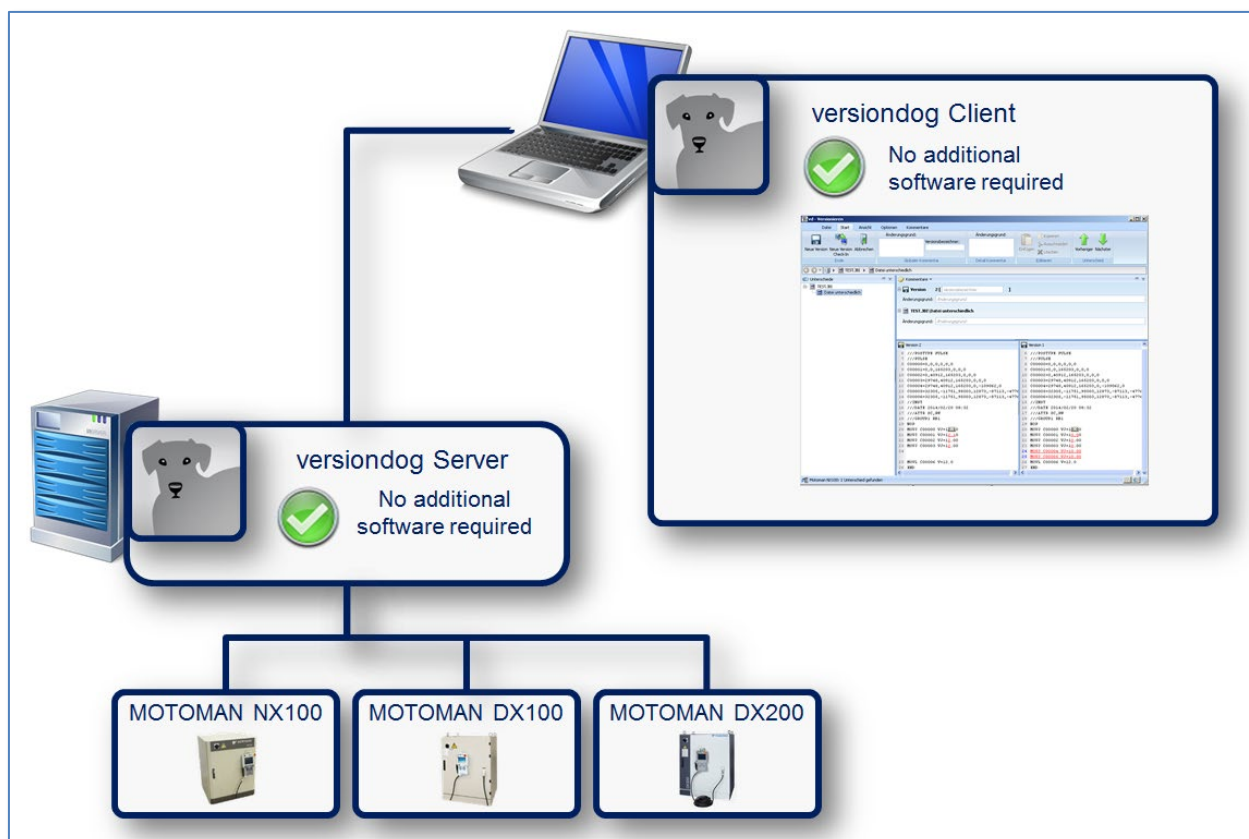
versiondog – for more efficient production

versiondog is the leading version control and data management software solution for automated production. It makes tracking changes and safeguarding data significantly more efficient.

versiondog brings order and clarity where project data needs to be continually changed and made available from a central source. The increased safety, security and certainty provided by this software system quickly results in measurably increased productivity. versiondog makes it easy for you to optimise the interplay between all your different types of robots, controllers, field devices, drives, programming languages, file formats and software applications.

This data management system gives you ultimate data traceability, minimising your risks and costs, and saving you time and effort.

Support for Motoman robots



Integration

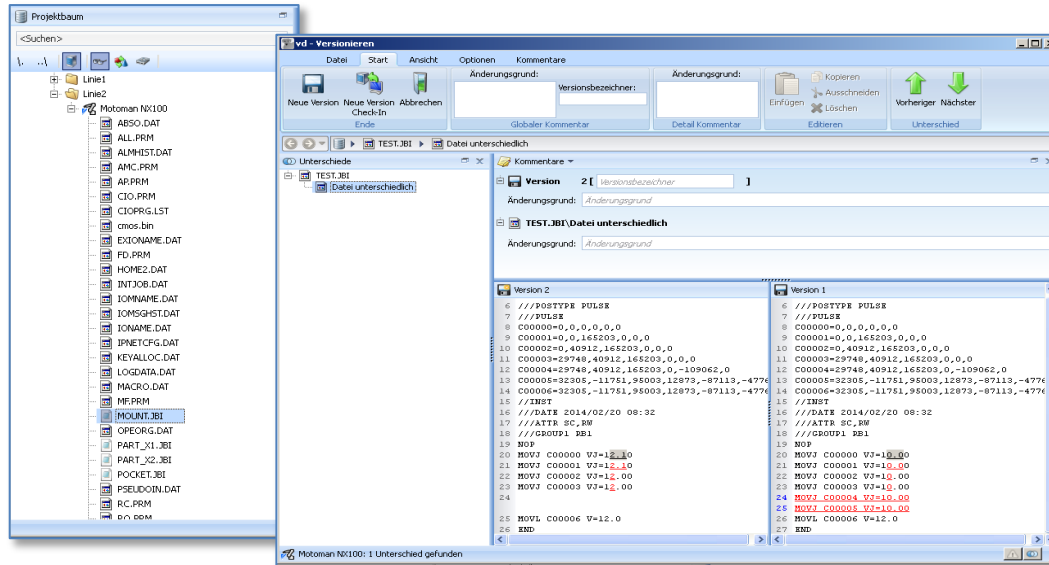


Fig. 1: Motoman program and controller data in the versiondog project tree

Fig 2: Detailed comparison between two versions (*.JBI)

Features and functions

Detecting the differences between the backup and the version. Detecting the differences between a backup and the previous backup.	✓
Clear presentation of complete change history	✓
Detailed graphical comparison for project files and controller data	✓
Automatic backup for disaster recovery	✓
Supported robot controllers: <ul style="list-style-type: none"> - NX100 - DX100 - DX200 	✓
No additional software required	✓
Management of program files, controller data and cmos.bin in a single component	✓
Custom component type for Motoman robots	✓
Tutorial available in versiondog INFO	✓

System requirements

versiondog release	3.2 onward
Motoman NX100	V NS3.00.00A(*)-00 onward

YASKAWA Motoman robots

More information

AUVESY GmbH

Tel. +49 6341 6810-440

Email info@auvesy.de

Web www.auvesy.com