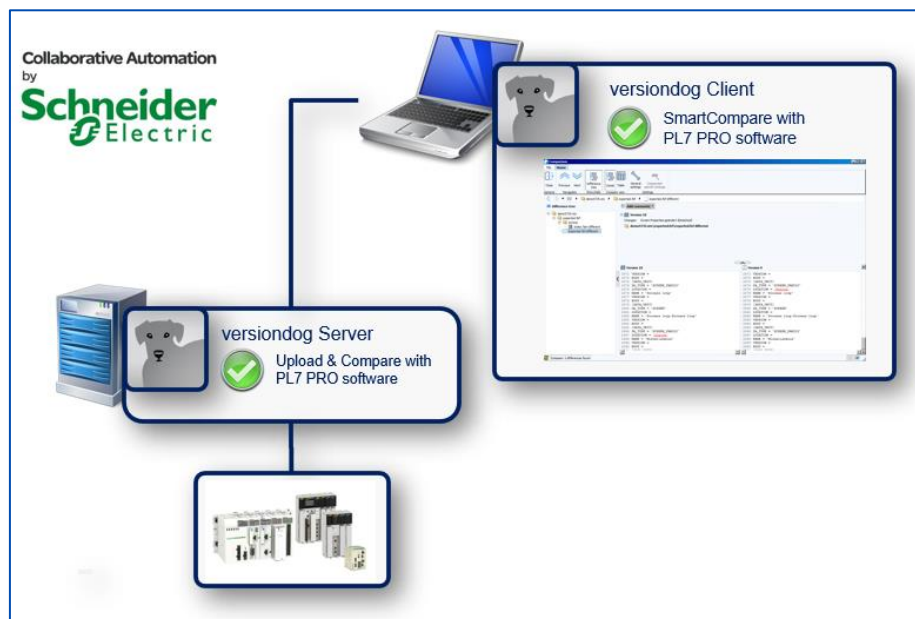


Factsheet

Schneider PL7 PRO



Schneider PL7 PRO

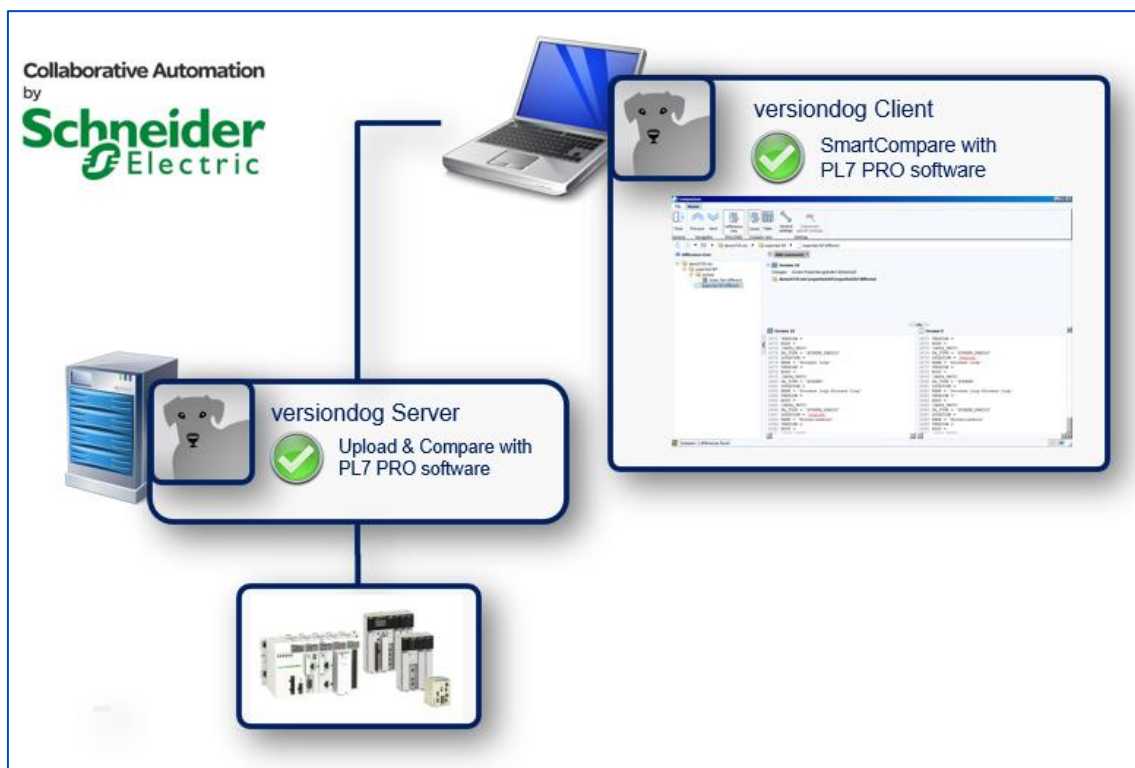
versiondog - For more efficient production

versiondog is the leading version control and data management software solution for automated production. It makes tracking changes and safeguarding data significantly more efficient.

versiondog brings order and clarity where project data needs to be continually changed and made available from a central source. The increased safety, security and certainty provided by this software system quickly results in measurably increased productivity. versiondog makes it easy for you to optimise the interplay between all your different types of robots, controllers, field devices, drives, programming languages, file formats and software applications.

This data management system gives you ultimate data traceability, minimising your risks and costs, and saving you time and effort.

Support for Schneider PL7 PRO projects



Schneider PL7 PRO

Integration

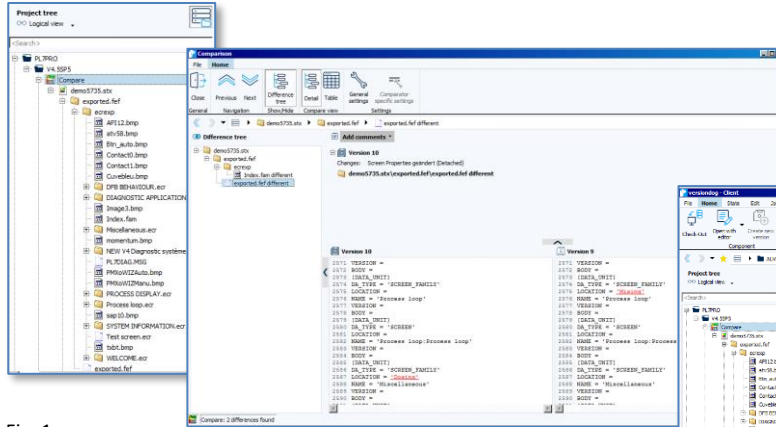


Fig. 1

Fig. 2

Fig. 1: Schneider PL7 PRO project tree in versiondog
 Fig. 2: Detailed tabular comparison of project settings
 Fig. 3: Schneider PL7 PRO project in UserClient

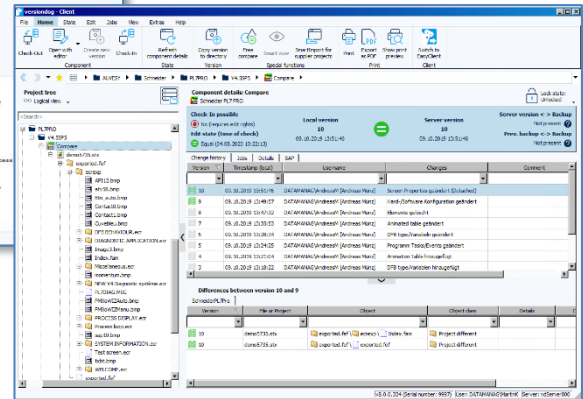


Fig. 3

Features and functions

Detect the differences between the backup and the version. Detect the differences between a backup and the previous backup	Integrated Schneider PL7 PRO project tree	✓
Clear presentation of the complete change history	Detailed graphical comparison	✓
Custom component type for Schneider PL7 PRO projects	Use selected project to launch PL7 PRO development environment from versiondog	✓
Tutorial available in versiondog INFO		✓

System requirements

versiondog release	
Schneider PL7 PRO version 4.5 SP5	7.5 onward

More information

AUVESY GmbH

Tel +49 6341 6810-440

Email sales@auvesy.de

Web www.auvesy.com