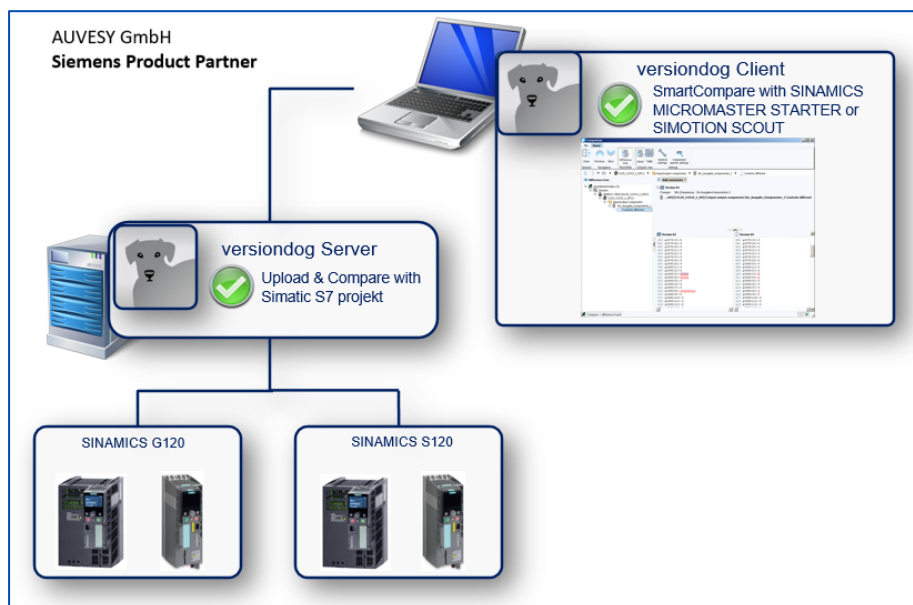


## Factsheet

# SIEMENS SINAMICS converters



## SIEMENS SINAMICS converters

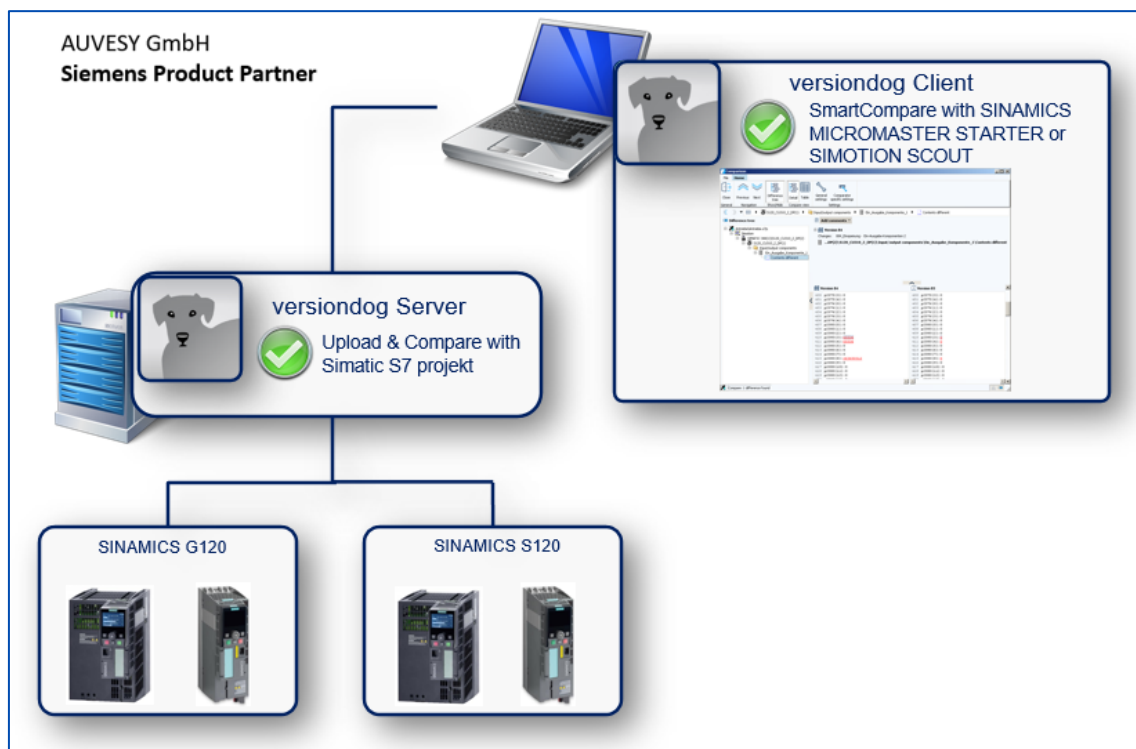
### versiondog - For more efficient production

versiondog is the leading version control and data management software solution for automated production. It makes tracking changes and safeguarding data significantly more efficient.

versiondog brings order and clarity where project data needs to be continually changed and made available from a central source. The increased safety, security and certainty provided by this software system quickly results in measurably increased productivity. versiondog makes it easy for you to optimise the interplay between all your different types of robots, controllers, field devices, drives, programming languages, file formats and software applications.

This data management system gives you ultimate data traceability, minimising your risks and costs, and saving you time and effort.

### Support for SIEMENS SINAMICS projects



## SIEMENS SINAMICS converters

### Integration

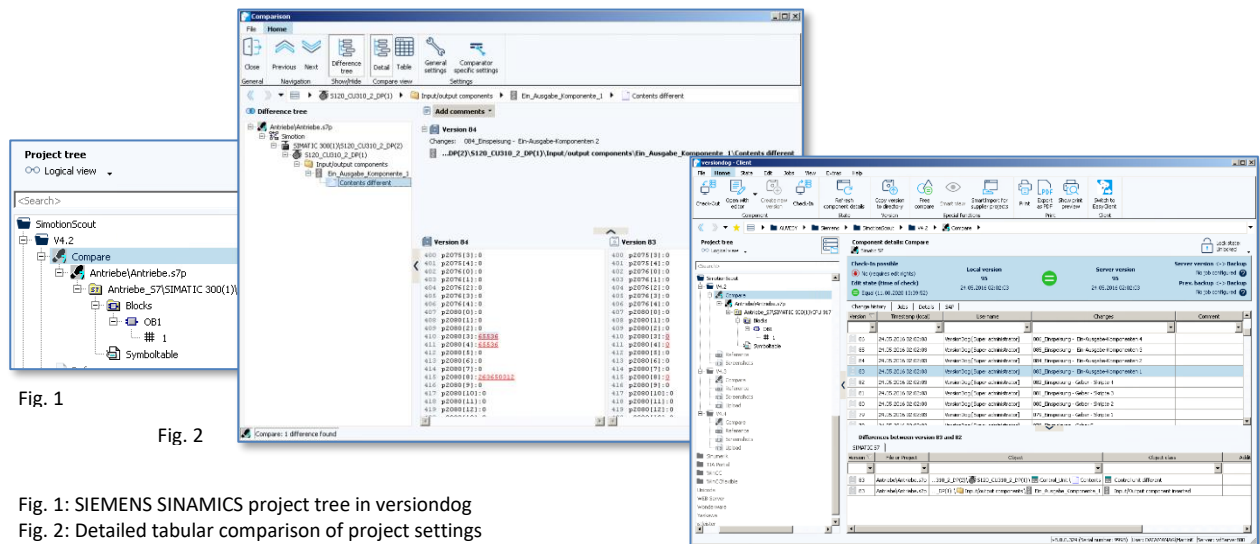


Fig. 1

Fig. 2

Fig. 3

Fig. 1: SIEMENS SINAMICS project tree in versiondog  
 Fig. 2: Detailed tabular comparison of project settings  
 Fig. 3: SIEMENS SINAMICS project in UserClient

## Features and functions

Detect differences between the backup and the version. Detect differences between a backup and the previous backup	Integrated Schneider SIEMENS SINAMICS project tree	✓
Clear presentation of the complete change history	Automated backup for disaster recovery	✓
Component type SIMATIC S7	Tutorial available in versiondog INFO	✓

## System requirements

versiondog release	
SIEMENS MICROMASTER STARTER, SIMOTION SCOUT	5.5 onward

## More information

AUVESY GmbH

Tel +49 6341 6810-440

Email [sales@auvesy.de](mailto:sales@auvesy.de)

Web [www.auvesy.com](http://www.auvesy.com)